

Welcome to Year 2



Meet the staff

- Miss Fallaize – Class Teacher
- Miss Kershaw – Teaching Assistant
- Mrs O'Sullivan – Nurture Support
- Mrs McDermott – Welfare



Curriculum

- English and Maths every day
- Spelling and Phonics every day
- P.E twice a week
- Science, D.T/Art, Geography/History, R.E, P.S.H.E, Computing and Music every week
- Provision – PM/1st Half Term



Home School Links

- Newsletter – half termly
- Class Dojo Page, School Website, Facebook, Parent App
- Parent meetings – November – Face to face/phone call – more information to follow
- Please check book bags **daily**.





P.E.

- PE is on **Wednesdays** and **Thursdays** for the Autumn Term (up until the Christmas holidays)
- Kit should include: white T-shirt, black or green shorts and pumps – black tracksuit bottoms or leggings in winter.
- Kit will be sent home at the end of a term and should be returned on first day back of each term

Homework

- Homework will be sent home every Friday and should be returned the following Friday.
- Homework will include:
10 Spellings to practise and either;
 - A Maths task
 - A writing task
 - An activity linked to our foundation curriculum such as Geography, Art etc.



Spellings

- A list of 10 spellings will be sent home each week to practise.

Autumn 1 – Week 1 – Spellings Homework



Look and say

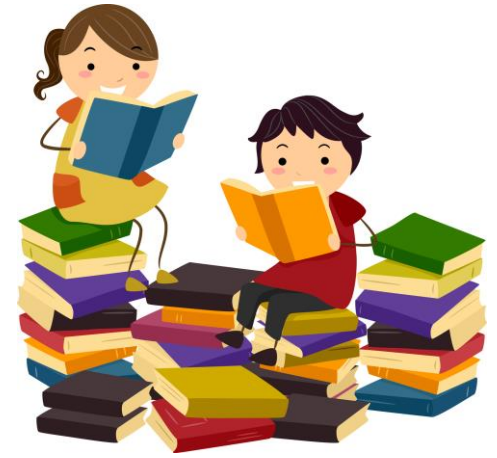


Look, say and write



Cover and write

Reading



We need your help

- Sign home reading record **daily**.
- Books will be changed on Mondays and Thursdays.
- Reading rewards (stickers, certificates)
- Extra help – all children will read with an adult in school every week.
- Try to read to them as well as with them much as you can!
- We will be visiting the library every week – children can choose one book each week. These are scanned and monitored.

Rewards and Consequences

- Growth mindset
- Celebrations of good work
- Stickers (reminders of achievement)
- Recognition Board
- Team Points
- Visits to Mrs Cornwell
- Messages Home
- Certificates
- Stars of the Day/Week
- Reflection time with adult support
- 3 warnings and removal of privileges
- Miss playtime or some of lunchtime
- Time in another classroom
- Complete work at playtime or lunchtime
- Time with Mrs Cornwell
- Communication with home
- Behaviour charts



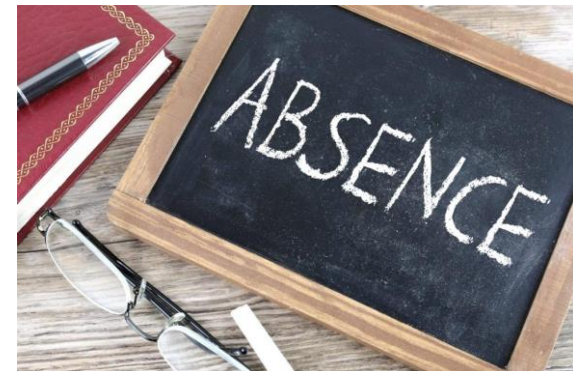
Assessments

- SATs are no longer a statutory requirement for KS1 and are therefore optional.
- Children will complete other forms of assessments throughout the year in Reading, Maths and Spelling and Grammar to inform areas for support and challenge.
- May use the SATS papers as an assessment tool in Summer 2 to inform End of KS1 judgements, but these will be based on teacher assessment.
- More information in Spring term.



Absences

- Phone school the first morning your child is ill.
- If unsure, contact school.
- Odd days off, do mount up – attendance is monitored.



Be on time

- Please try to ensure your child is here on time.
- Doors open at 8:50am
- In the first 15 minutes we complete registration and handwriting.
- If arrive after 9:30 missed handwriting and the introduction to English or Maths.

Ways you can help

- Come to school **every day on time.**
- Help your child to complete their homework **every week.**
- Listen to your child read **every day.**
- Read to your child.
- Encourage them to be independent.
- Ensure that they have their PE kit in school.
- Read letters and check Class Dojo etc.
- Check book bags daily.
- Name all clothes including P.E kit.

Other information

- Inform the office or let me know if someone else is collecting your child.
- Small stud earrings only – to be removed/covered before coming to school on PE days.
- No nail varnish.
- No tattoos.
- School shoes – not trainers.

Any Questions?

